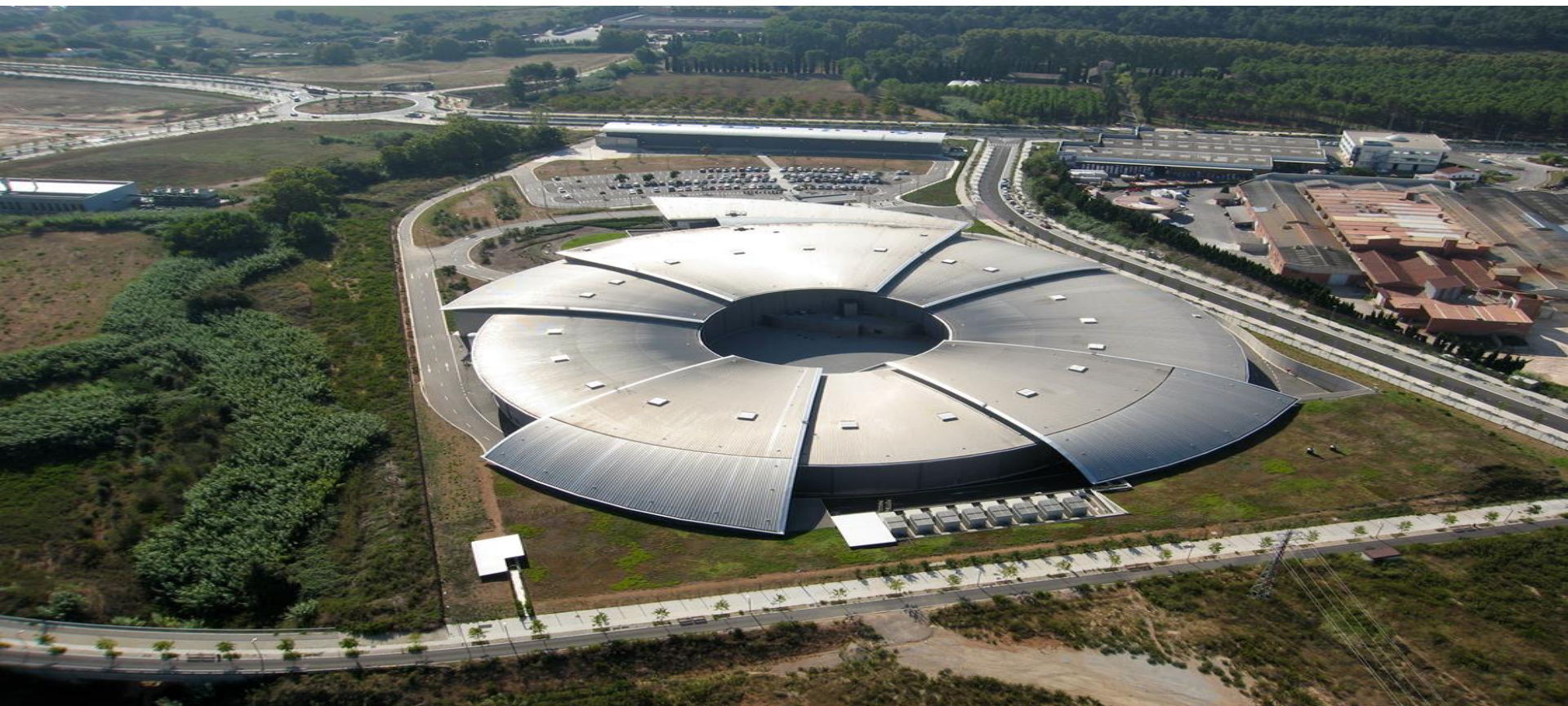


# Industry and ALBA working together



Alejandro Sánchez  
Industrial Liaison Office Director



# WHAT DOES ALBA SYNCHROTRON OFFER TO INDUSTRY

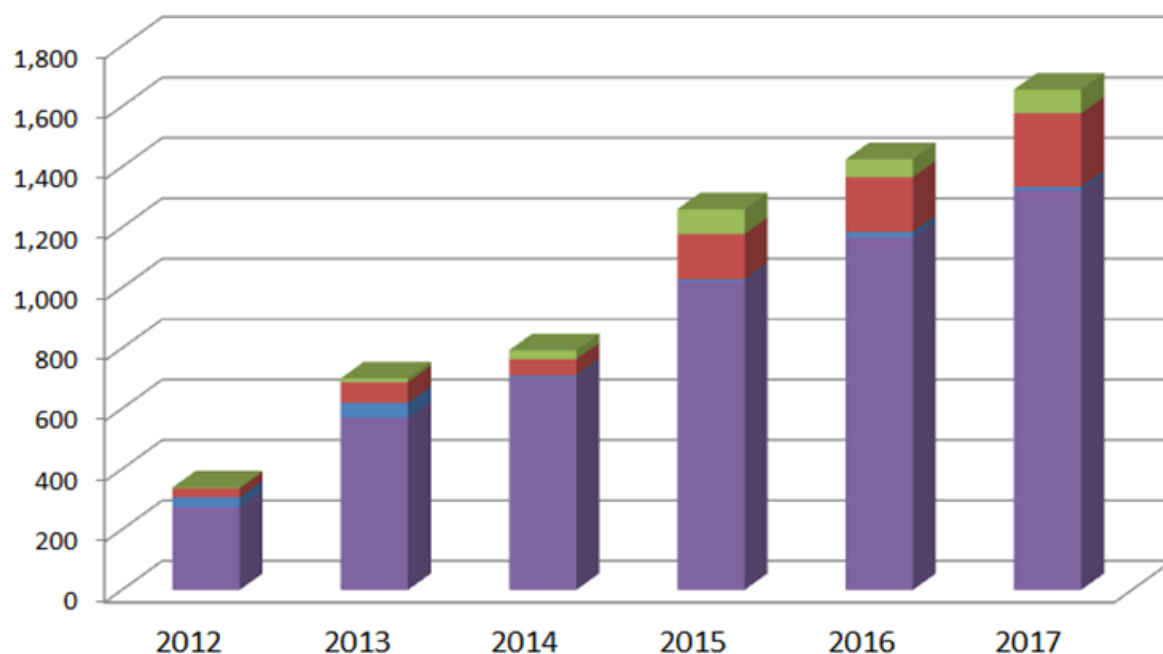


ALBA Synchrotron offers industry **cutting-edge techniques for characterising materials** and processes at micro and nanoscopic levels by using synchrotron light, providing results focused on a company's specific needs.

# WHAT?

Yearly users

Official Users Expert Users In-House Users Industrial Users



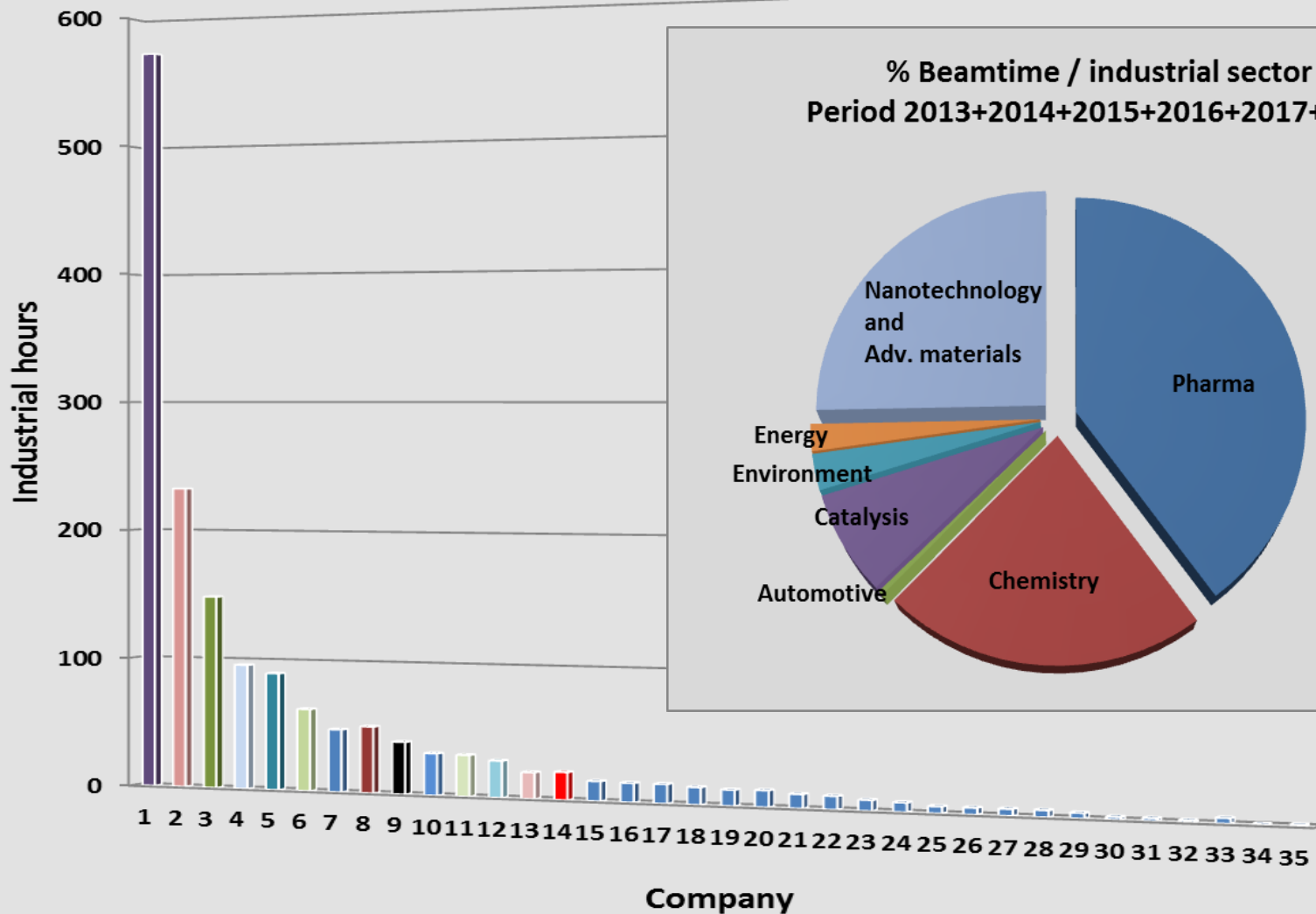
## Synchrotron light techniques:

- X-ray microscopy
- Powder diffraction
- X-ray absorption
- IR micro-spectroscopy
- Macromolecular crystallography
- Small and wide angle scattering (SAXS and WAXS)
- X-ray absorption
- Photoemission (microscopy, near ambient pressure)
- X-ray magnetic dichroism

More than 30% are international users

# INDUSTRIAL CLIENTS

**Industrial hours / company**  
**Period 2013+2014+2015+2016+2017+2018**





# WHY



## DO COMPANIES USE ALBA SYNCHROTRON?

ALBA Synchrotron techniques provide **outstanding results** that cannot be achieved with other equipment and techniques and which are very valuable in boosting a company's competitiveness.



# WHY?



LOWER DETECTION LEVELS



CHEMICAL MAPPING



OXIDATION STATE DETERMINATION



HIGHER RESOLUTION



FASTER EXPERIMENTS



WIDE VARIETY OF SAMPLE ENVIRONMENTS



# HOW TO CONTACT ALBA



The ALBA Synchrotron has established an Industrial Liaison Office as a **single point of contact** to provide a full service to its customers, maintaining confidentiality and providing support throughout the service.

**[industrialoffice@cells.es](mailto:industrialoffice@cells.es)**

## PROPRIETARY ACCESS

A dedicated team is fully devoted to Industrial customers at ALBA ([Industrial Liaison Office](#))

The Industrial Liaison Office will be always in contact with the customer and will provide assistance

It is recommended to hold a first meeting or teleconference with the Industrial Office and Experts to understand customer needs (at no charge)

A quotation will be submitted to the customer for its acceptance

Measurements can be performed typically 1 month after quotation acceptance

A report can be submitted to the customer.

The [Industrial Liaison Office](#) will provide you post-service assistance.

YOU WILL HAVE  
ALWAYS ONE  
**CONTACT PERSON**  
PROVIDING YOU  
GUIDANCE AND  
ASSISTANCE

**[industrialoffice@cells.es](mailto:industrialoffice@cells.es)**



# CALIPSOplus – H2020

## European Project

Convenient Access to Light Sources Open to Innovation,  
Science and to the World



## ***SME access to ALBA Synchrotron***

- *ALBA synchrotron is a partner of **CALIPSOplus**.*
- *Small and Medium Enterprises (SME) may access to synchrotrons with the support of **CALIPSOplus** following the European rules.*
- ***ALBA** ([industrialoffice@cells.es](mailto:industrialoffice@cells.es)) will help you.*



CALIPSOplus has received funding from the European Union's Horizon 2020 research and innovation programme under grant agreement No 730872

# Synchrotron light can help Metallurgy and Treatment Surface industry!

[industrialoffice@cells.es](mailto:industrialoffice@cells.es)



**Thank you for your attention !**