

How to Access ALBA's services:

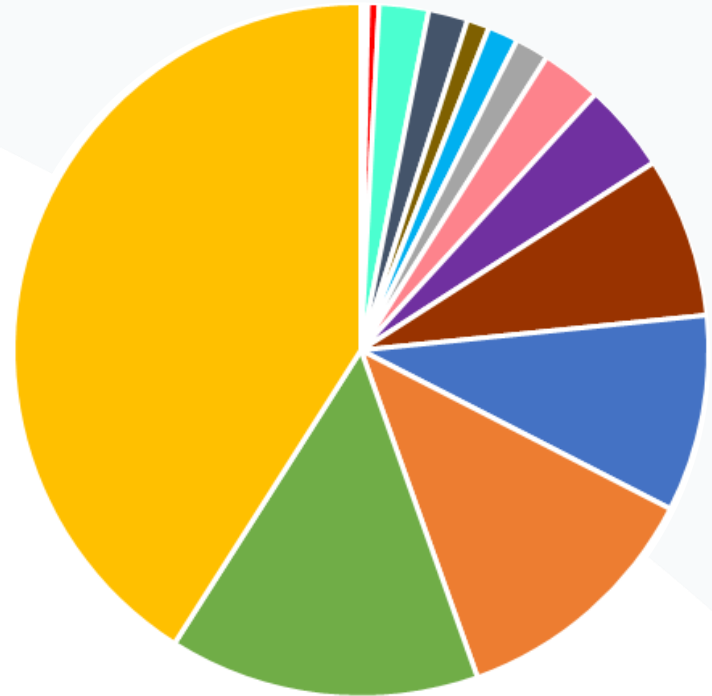
Opportunities with ReMade@ARI

Virgínia Boix

Industry Liaison Officer at ALBA Synchrotron
Manager of the industry access routes of ReMade@ARI

ALBA & INDUSTRY

- **More than 80 different clients**
- **Big companies and SMEs**
- **Local companies and from abroad**
- **Wide range of industry sectors**

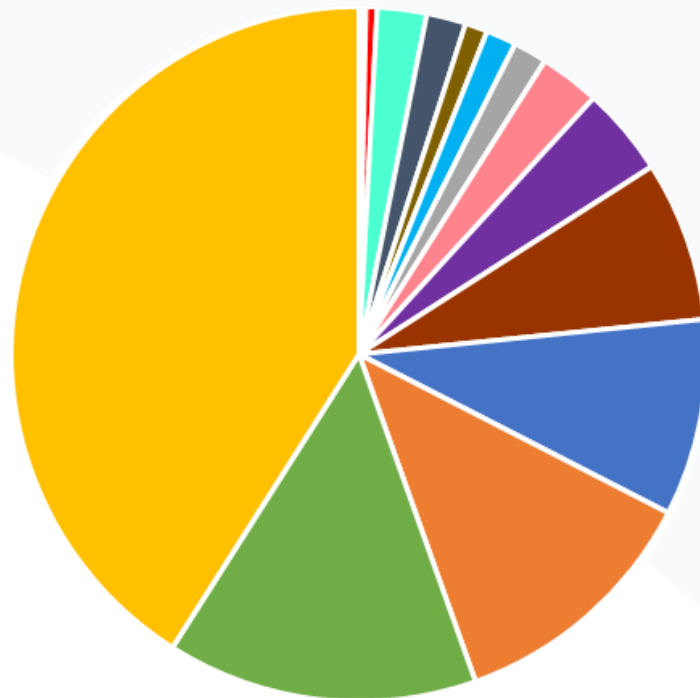


% of beamtime per industry sector

Data accumulated from 2013 - 2023

ALBA & INDUSTRY

- | | |
|--|------------------------------|
| ■ Additive manufacturing | ■ Automotive and aerospace |
| ■ Textile | ■ Instrumentation and optics |
| ■ Agriculture, food and packaging | ■ Environment and mining |
| ■ Metallurgy | ■ Building materials |
| ■ Health and cosmetics | ■ Electronics |
| ■ Energy storage and generation | ■ Polymers |
| ■ Nanotechnology and high tech materials | ■ Chemistry and catalysis |
| ■ Pharmaceutical | |



% of beamtime per industry sector

Data accumulated from 2013 - 2023

How to contact ALBA?



ALBA Synchrotron has an established **Industrial Liason Office** that acts as a **single point of contact**



To provide a **full service** to its costumers



Maintaining **confidentiality** and providing support throughout the service

industrialoffice@cells.es

The Industry Liaison Office

a “one-stop-shop” that provides guidance and coordination for the whole access



Alejandro Sánchez
PhD Physics



Núria Valls
*PhD in Structural
Biology*



Marta Ávila
*PhD in
Chemistry*



Bárbara Calisto
*PhD in Structural
Biology*



Virgínia Boix
PhD Physics

Our services

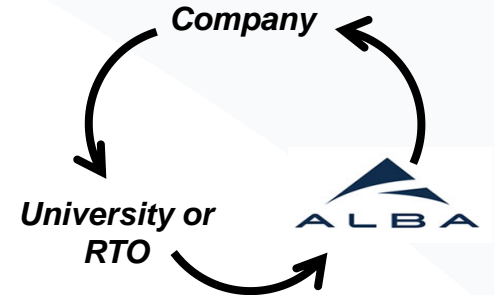
Single access



**Service supported
by external funding**




**Services provided
with other partners**





Single access, how does it work?

- 1. Initial meeting:** visit us or meet online at no cost for you. We want to understand your needs and assess how can we support you!
- 2. Action plan:** You get advice on which can techniques work better for your challenge, and we agree on an action plan
- 3. Quotation:** we send you a quotation for the services
- 4. Measurements:** We measure your samples typically in less than a month, you can send them to us or bring them yourself!
- 5. Report:** We send you the results 
- 6. Invoice:** Once the service is finalized

Our services

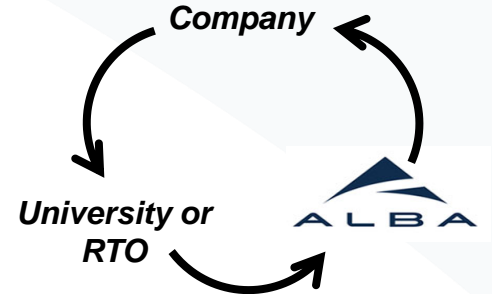
Single access



**Service supported
by external funding**



**Services provided
with other partners**





REcyclable MAterials DEvelopment at Analytical Research Infrastructures

remade-project.eu

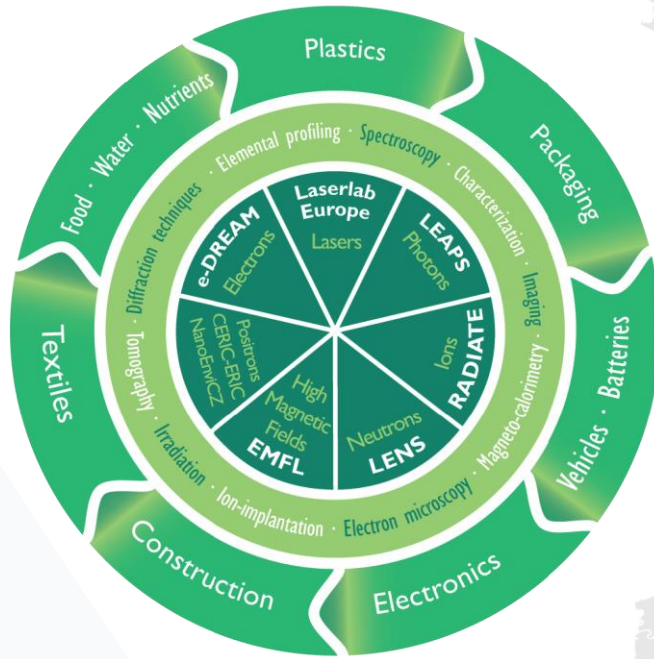
WHAT IS ReMade@ARI?

**A CONSORTIUM OF
ADVANCED RESEARCH
INFRASTRUCTURES**

**MORE THAN 50 RESEARCH
CENTERS AT YOUR SERVICE**

**A PROJECT WITH A HEART
OF SCIENTISTS**

**A TEAM DEDICATED TO
INDUSTRY AND
INNOVATION**



**A CONSORTIUM OF
ADVANCED RESEARCH
INFRASTRUCTURES**

**MORE THAN 50 RESEARCH
CENTERS AT YOUR SERVICE**

**A PROJECT WITH A HEART
OF SCIENTISTS**

**A TEAM DEDICATED TO
INDUSTRY AND
INNOVATION**

How to access ALBA with ReMade@ARI

WHAT?

“Full service” access to Advanced Research Infrastructures:

- Fast and simple measurements, including data analysis!
 - **Confidential**
 - TNA requirement!
- 
- A red, rectangular stamp with the word "CONFIDENTIAL" in bold, capital letters, tilted slightly to the right.

CONFIDENTIAL

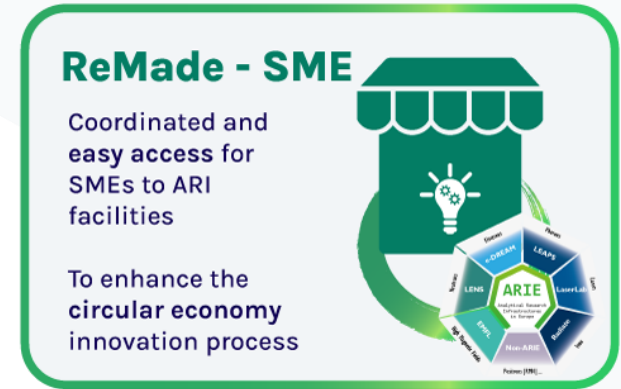
FOR WHOM?

Small and Medium Companies working on CE projects

WHEN?

Continuous applications

2nd Call for proposals open now!
(until 15th of December 2024)



With **ReMade-SME** you can test our characterization tools free of charge, discover new technologies, advance on your CE projects!

How to access ALBA with ReMade@ARI

1. Preparation: It is recommendable to contact first the facility to discuss the project. If you are not sure where to go, the project will offer you scientific guidance completely free.

2. Submit a simple proposal through our single-entry access point

3. Evaluation: The facility check the feasibility and the proposal is evaluated by external reviewers

4. Voucher scheme

5. Measurements and final report



How to access ALBA with ReMade@ARI

WHAT?

30.000€ grant to cover the KP or RTO services

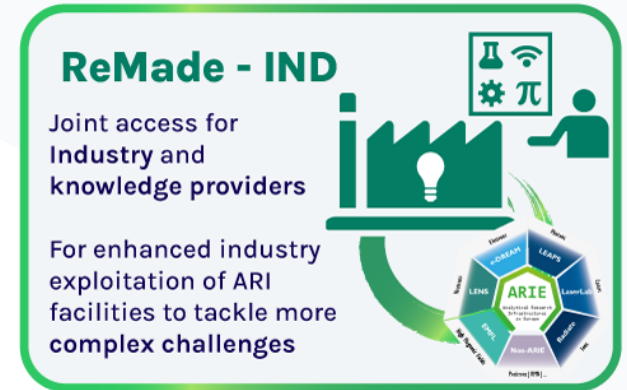
Research projects in Advanced Research Infrastructures (such as ALBA)

FOR WHOM?

Industry in collaboration with Knowledge Providers or RTOs working on projects related with the Circular Economy

WHEN?

2nd Call opens **April 19th, 2024!**



With **ReMade-IND** Industry gets funding for scientific expert services.

Knowledge providers can use ARIs for their customer projects, as some costs for their services will be covered

How to access ALBA with ReMade@ARI

1. Preparation: It is recommendable to contact first the facility to discuss the project. If you are not sure where to go, the project will offer you scientific guidance completely free.

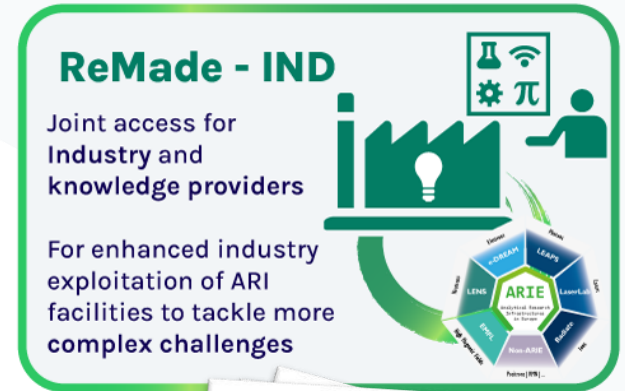
2. Submit a proposal through our single-entry access point

3. Evaluation: The facility check the feasibility and the proposal is evaluated by external reviewers

4. Start of the project (18 months max)

5. Final report and reimbursement

industry@remade-project.eu



Our services

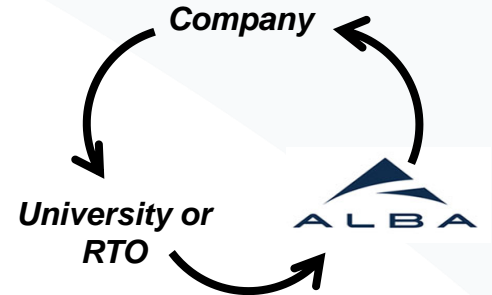
Single access



**Service supported
by external funding**



**Services provided
with other partners**



How to access ALBA with LEAPSINNOV

- Specific programme for SMEs (TamaTA)
- **FREE ACCESS TO ALBA**
- Call open: <https://wayforlight.eu/en/industries/>
- ALBA's Industrial office (industrialoffice@cells.es) will help



INDUSTRIES

Your company may gather invaluable information about your product at the micro-scale by using advanced experiments at European infrastructures. Talk to us about your challenge and benefit from the current LEAPS-INNOV project support.

APPLY HERE ↓



English ▾

INDUSTRIAL LIAISON OFFICES

Contacts

SMEs are encouraged to contact directly to any of the following light sources to better prepare the industrial proposals

CELLS (ALBA SYNCHROTRON)

Barcelona, SPAIN
🔗 <http://www.albasynchrotron.es/en/industry/services>
✉ industrialoffice@cells.es

DESY

Hamburg, GERMANY

How to access ALBA with LEAPSINNOV

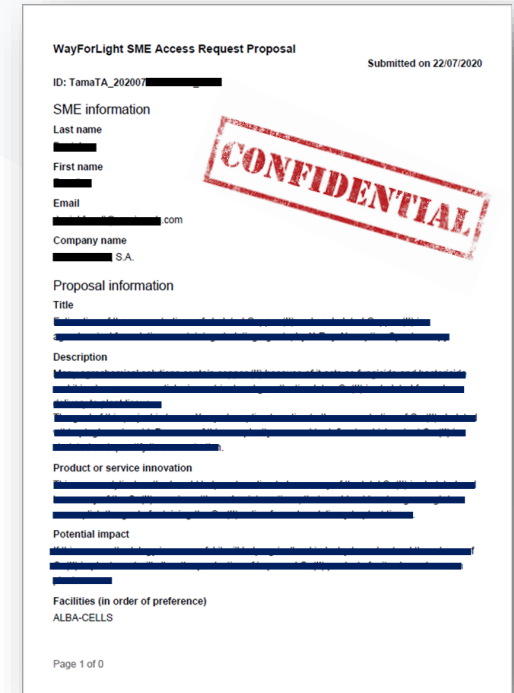
1. Preparation: It is recommendable to contact first the facility to discuss the project. If you are not sure where to go, the project will offer you scientific guidance completely free.

2. Submit a simple proposal through our single-entry access point

3. Evaluation: The facility check the feasibility and the proposal is evaluated by external reviewers

4. Voucher scheme

5. Measurements and final report



WayForLight SME Access Request Proposal

Submitted on 22/07/2020

ID: TamaTA_202007 [REDACTED]

SME information

Last name [REDACTED]

First name [REDACTED]

Email [REDACTED].com

Company name [REDACTED] S.A.

Proposal information

Title [REDACTED]

Description [REDACTED]

Product or service innovation [REDACTED]

Potential impact [REDACTED]

Facilities (in order of preference)
ALBA-CELLS

Page 1 of 0

CONFIDENTIAL

Summary



ALBA can provide valuable information for your company



The Industrial Liaison Office will guide you throughout the whole process



Several funding opportunities available for industry!



Thank you / Gracias / Gràcies!

industrialoffice@cells.es